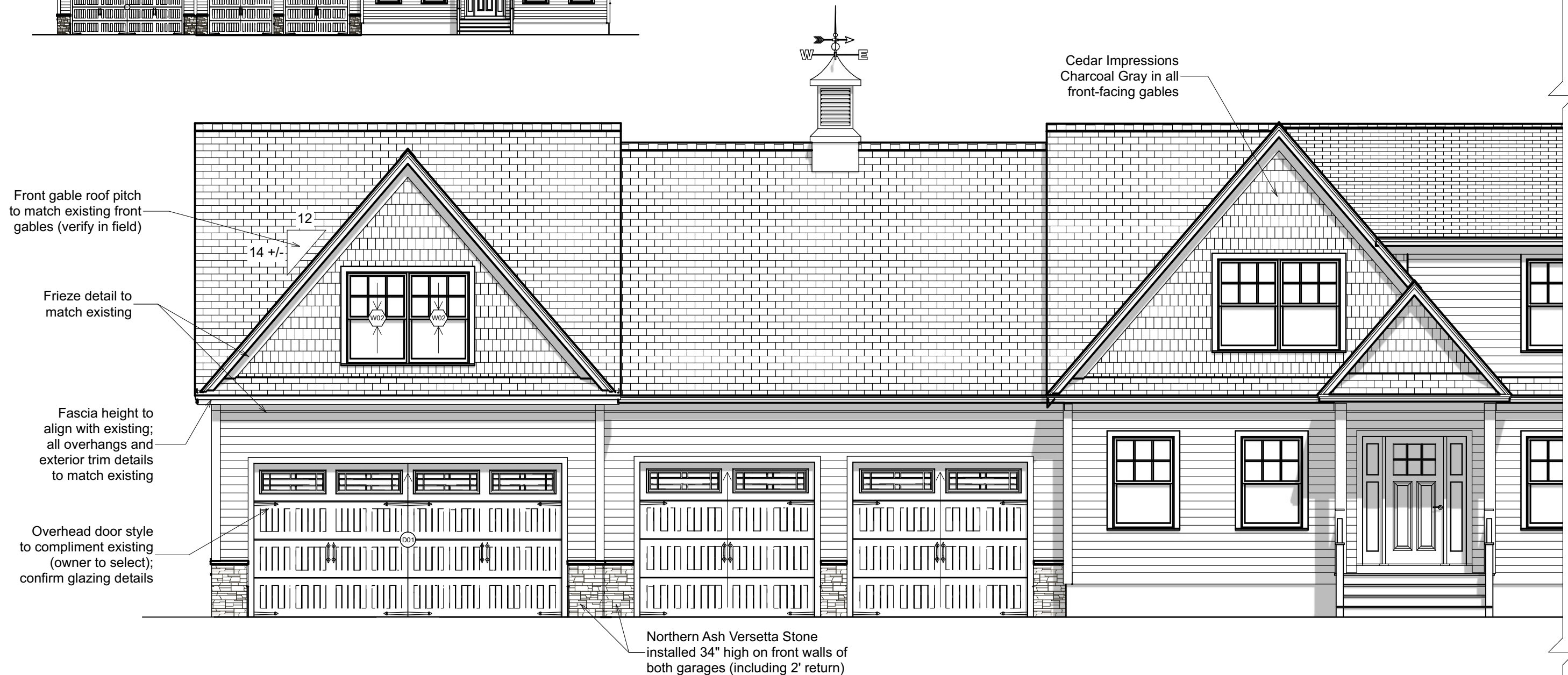


Garage Addition
20' x 26'



E1 - Front Elevation

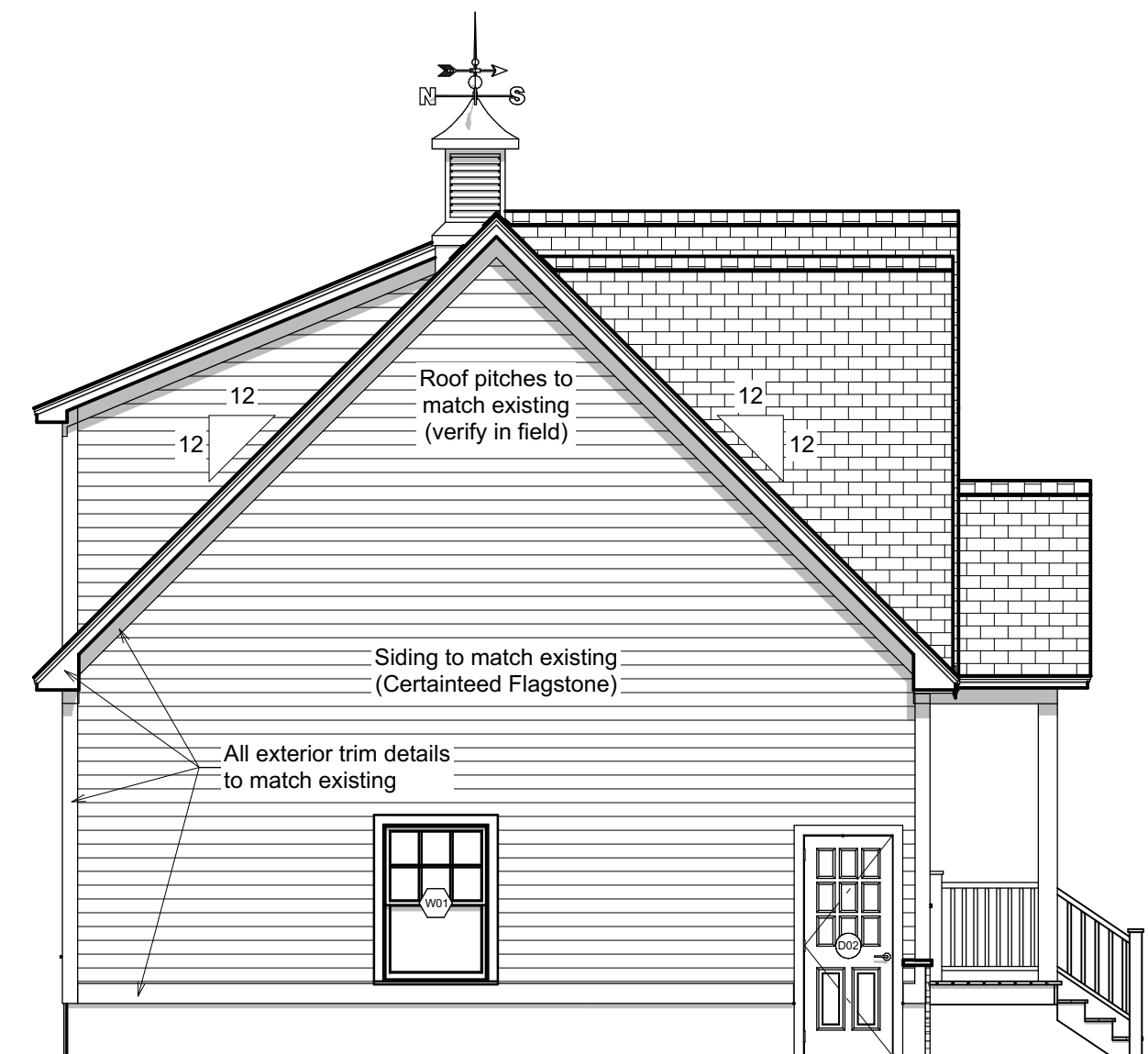
Scale: 3/16" = 1'0"

DOOR SCHEDULE

NUMBER	SIZE CODE	DESCRIPTION	COMMENTS
D01	16080	OVERHEAD SECTIONAL DOOR	OWNER TO SELECT DOOR & OPENER
D02	2868	1/2 GLAZED, 9-LITE, OUTSWING DOOR	
D03	2868	1/2 GLAZED, 9-LITE, OUTSWING DOOR	EXISTING, SALVAGED FROM EXISTING GARAGE
D04	2868	CASED DOORWAY	PREVIOUS DOOR LOCATION; WALK-THROUGH BETWEEN GARAGES

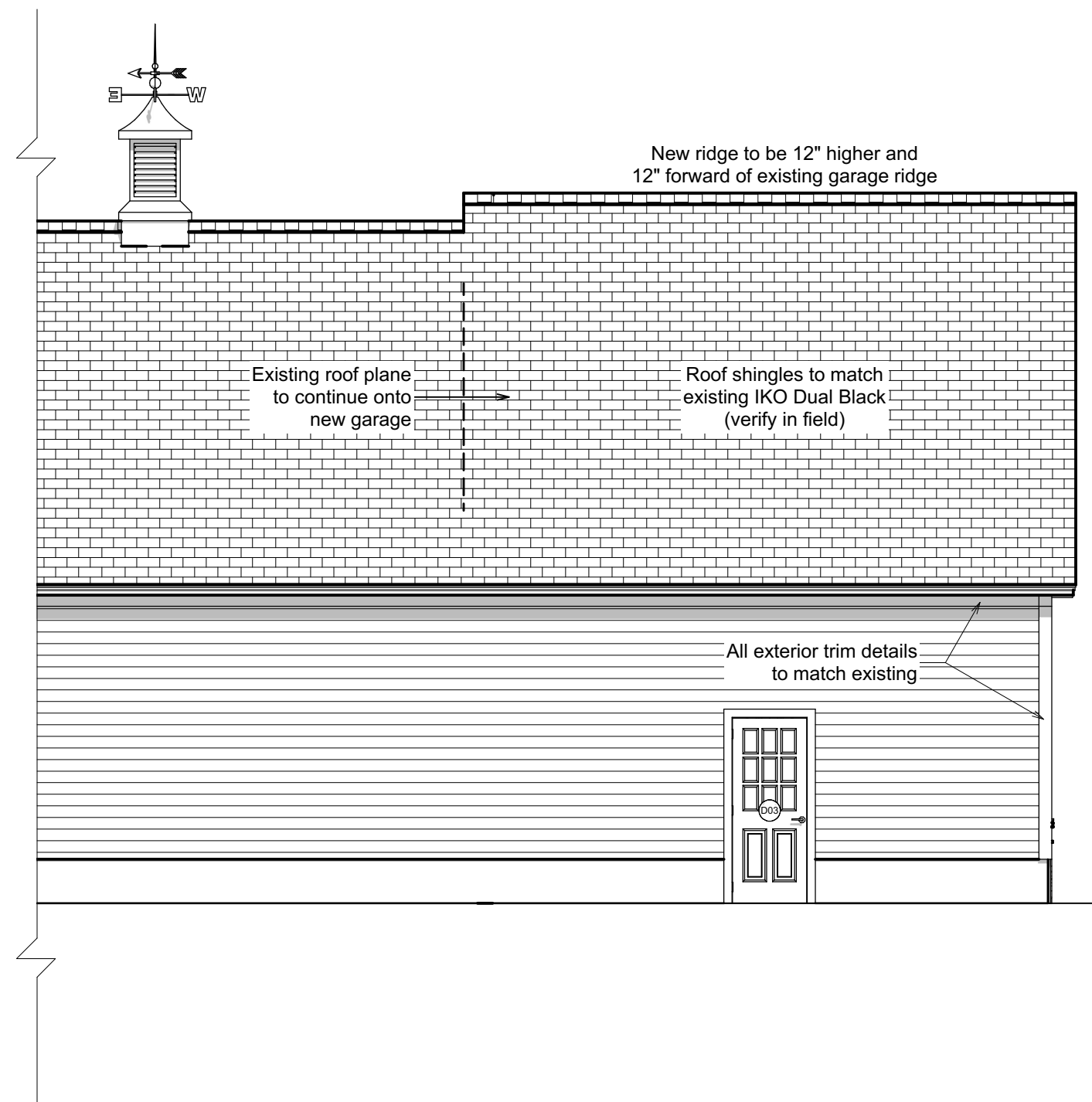
WINDOW SCHEDULE

NUMBER	QTY	FLOOR	DESCRIPTION	WIDTH	HEIGHT	COMMENTS
W01	1	1	DOUBLE HUNG	38"	57"	EXISTING, SALVAGED FROM EXISTING GARAGE
W02	2	2	DOUBLE HUNG	38"	57"	MATCH EXISTING MFG, MODEL, & SIZE
W03	1	1	CASED PASS-THROUGH OPENING	38"	57"	PREVIOUS WINDOW LOCATION



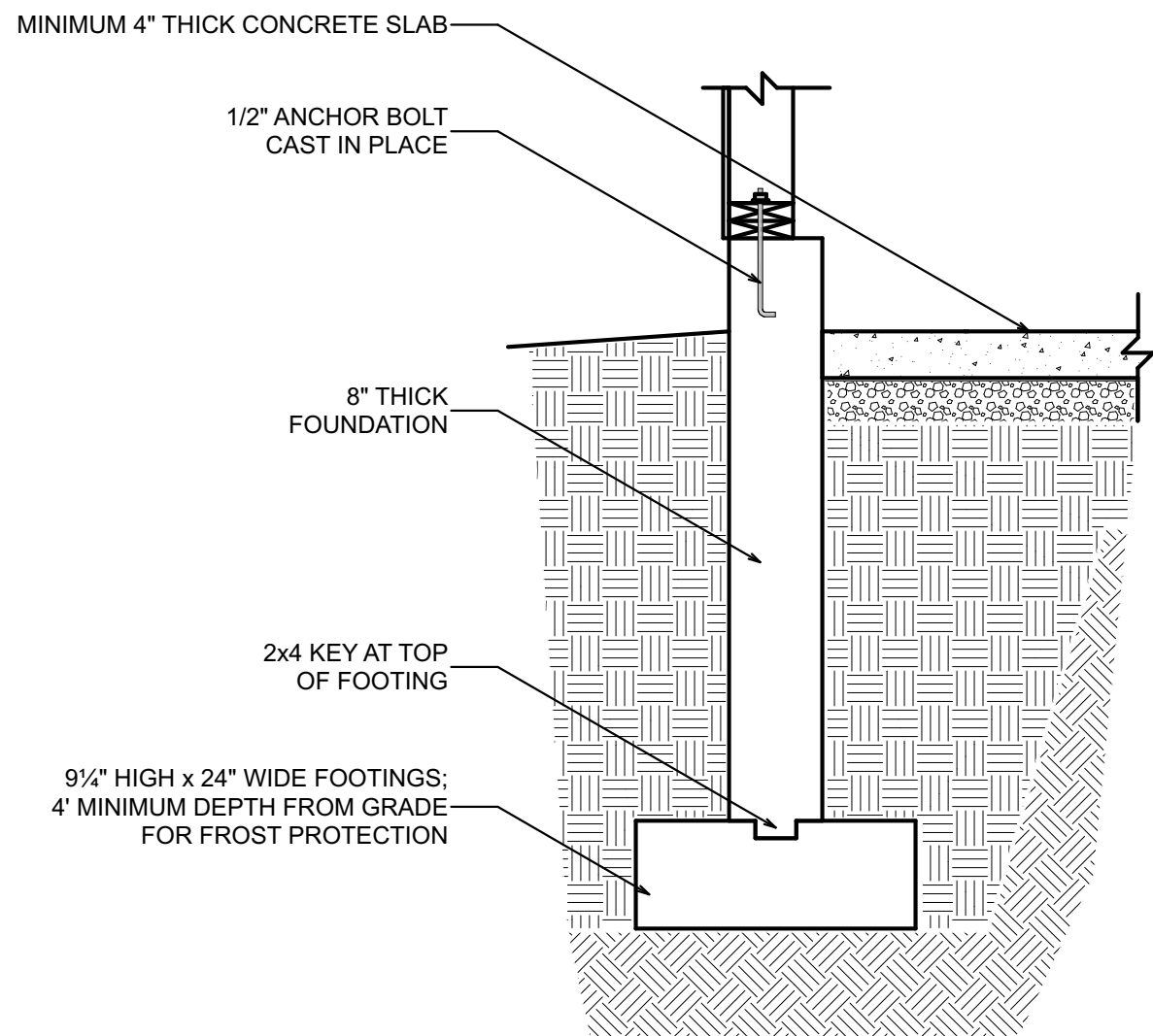
E2 - Left Side Elevation

Scale: 3/16" = 1'0"



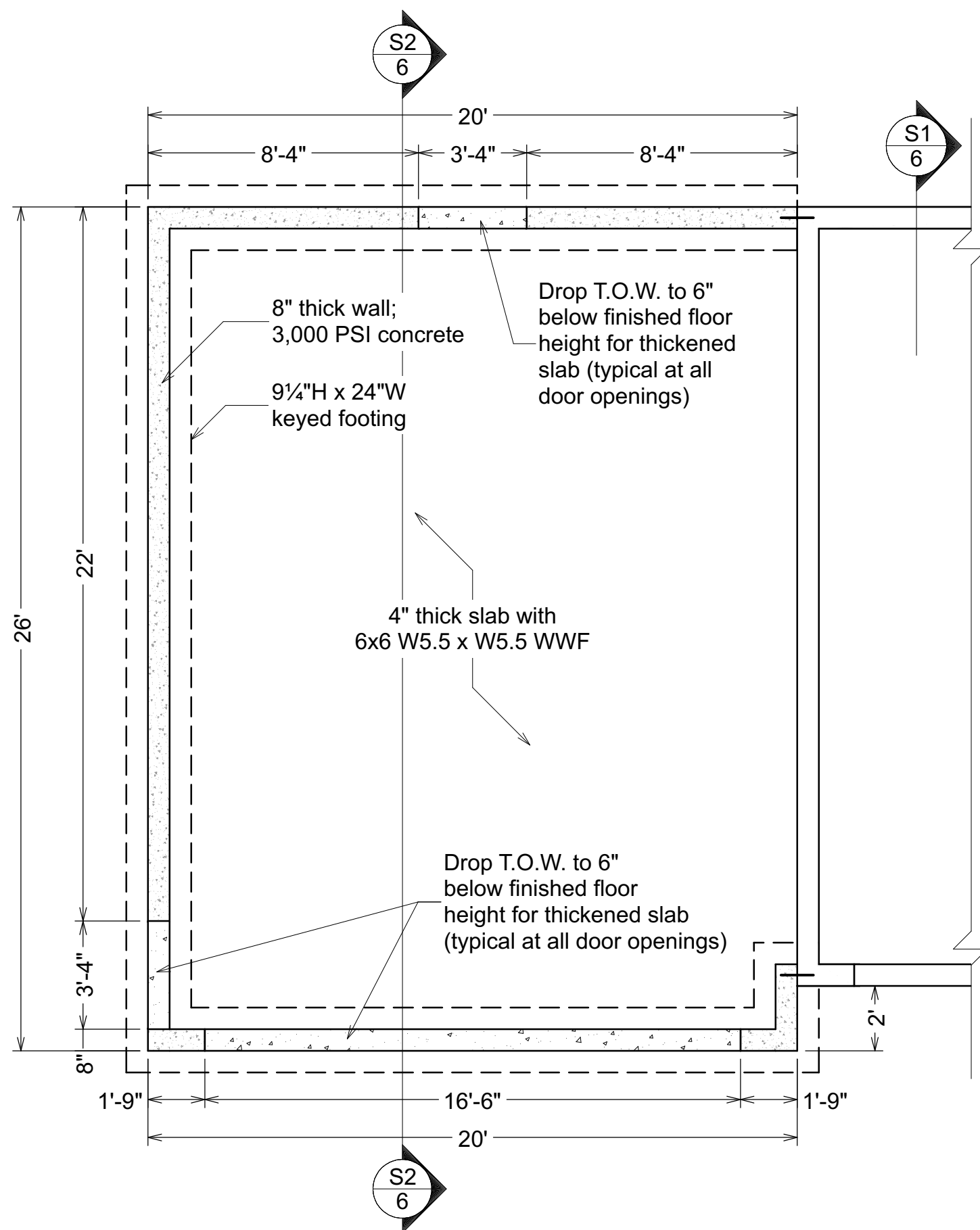
E3 - Rear Elevation

Scale: 3/16" = 1'0"



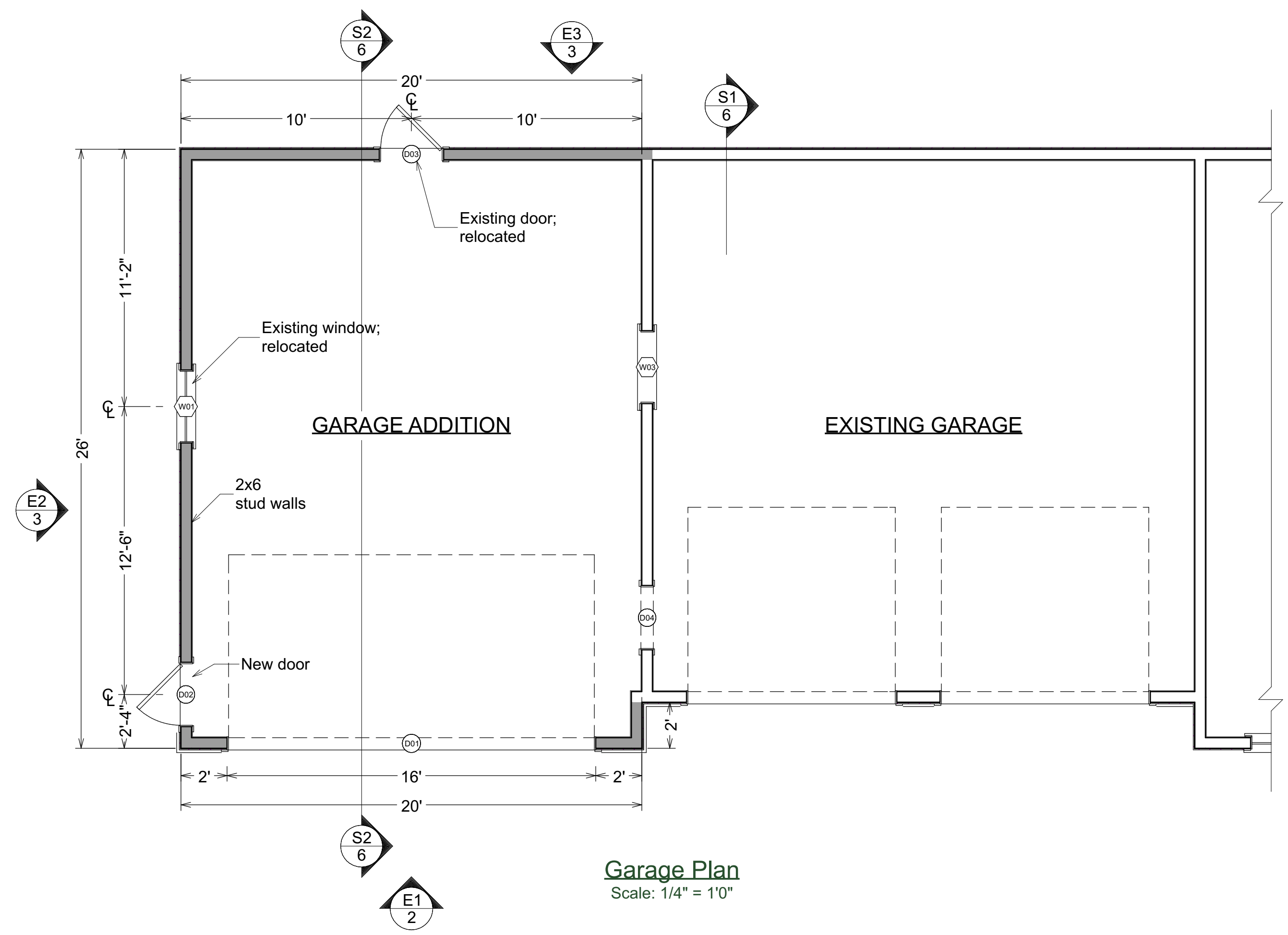
Typical Foundation Wall Detail

Scale: 3/4" = 1'0"

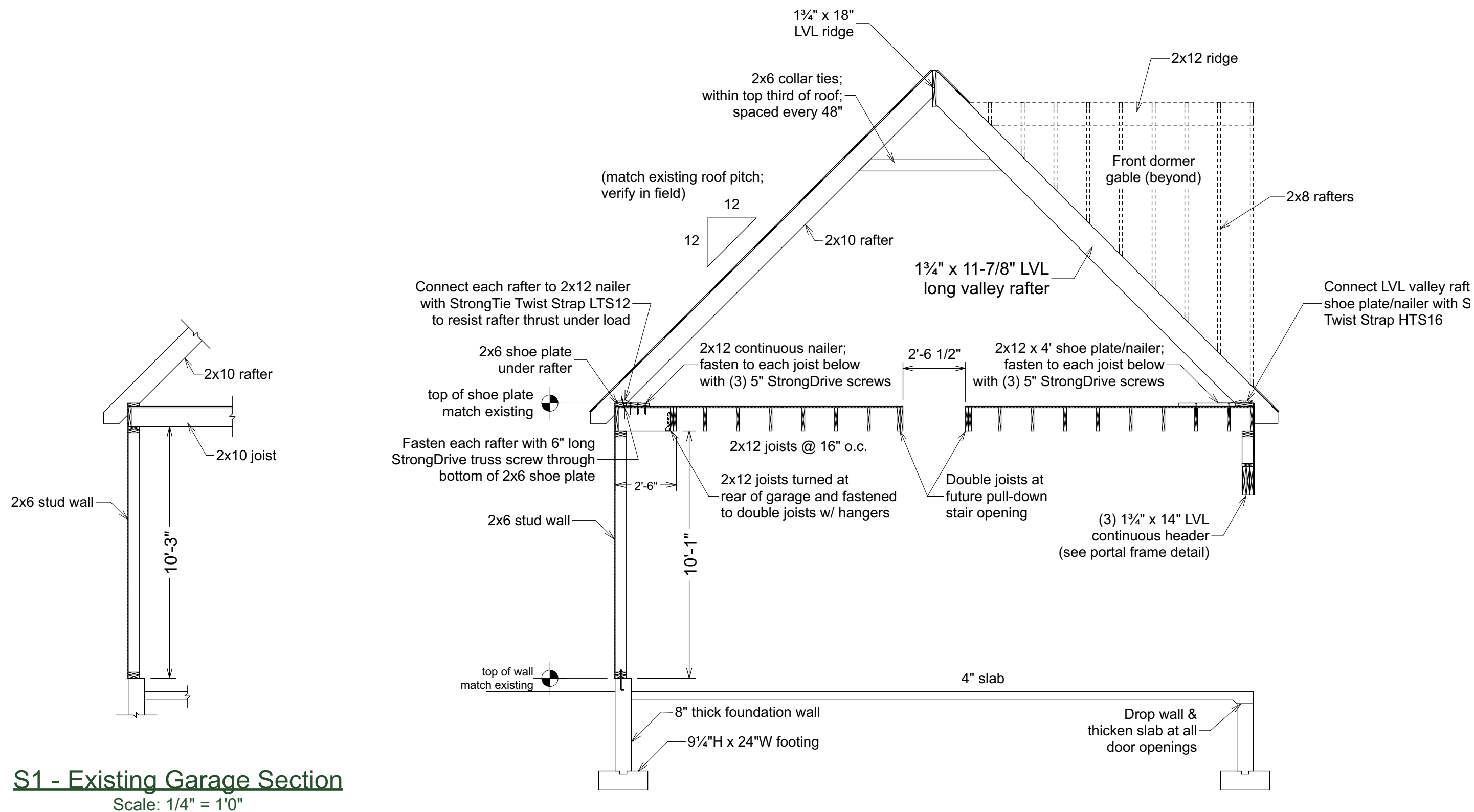


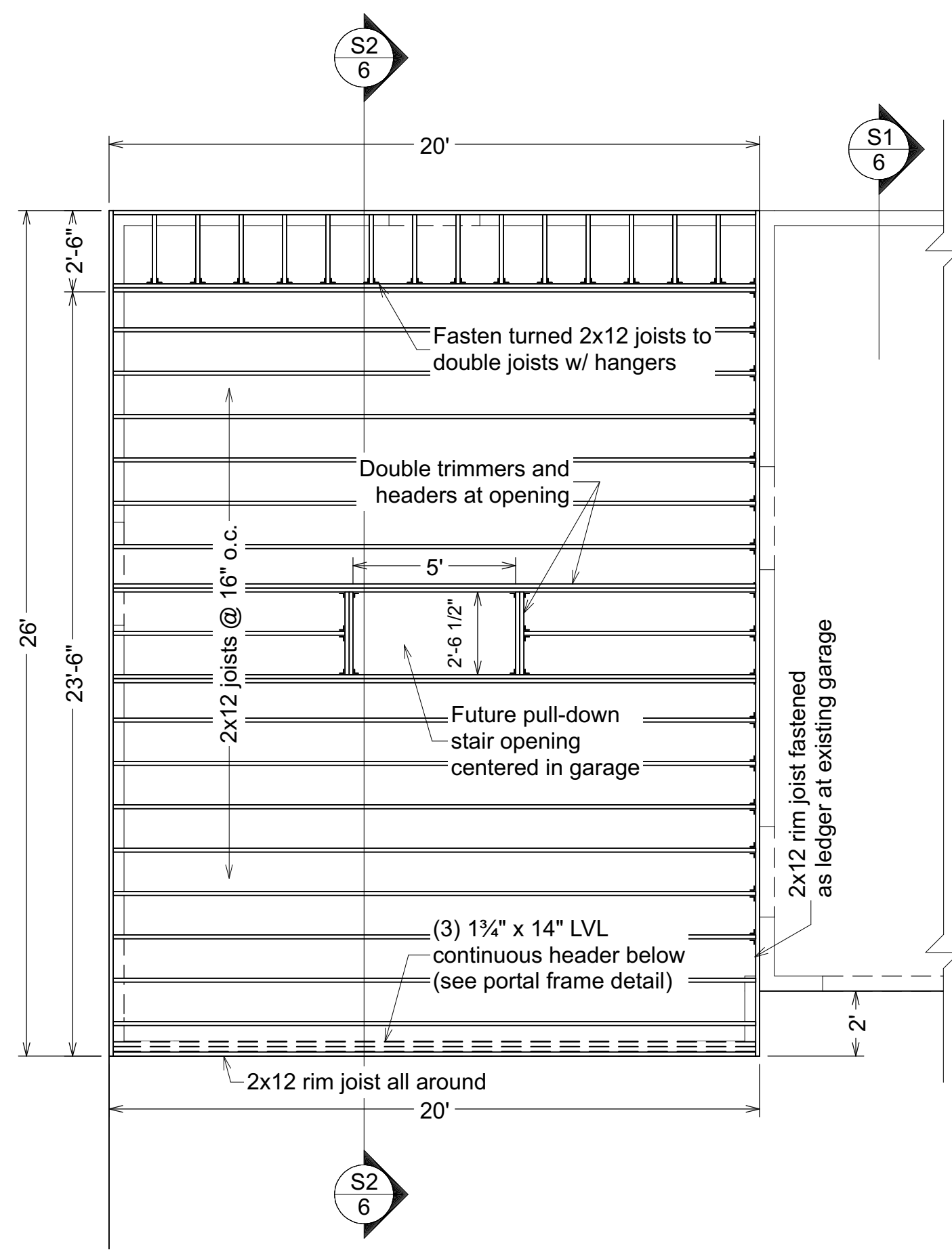
Foundation Plan

Scale: 1/4" = 1'0"

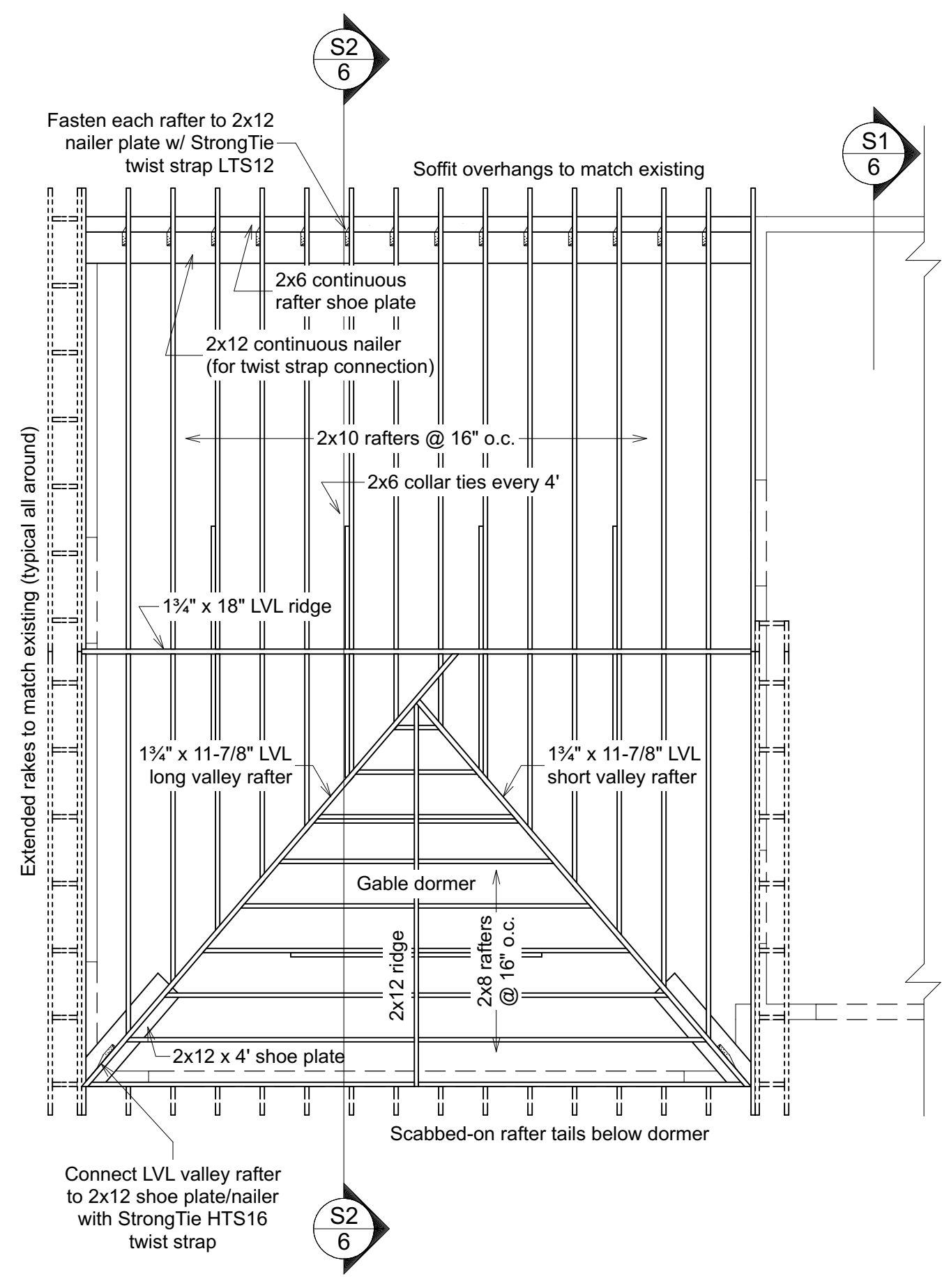


Garage Plan
Scale: 1/4" = 1'0"

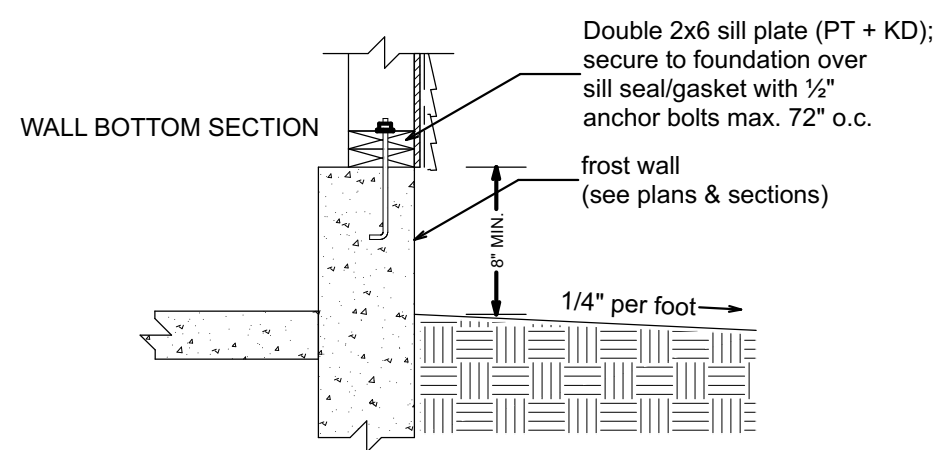
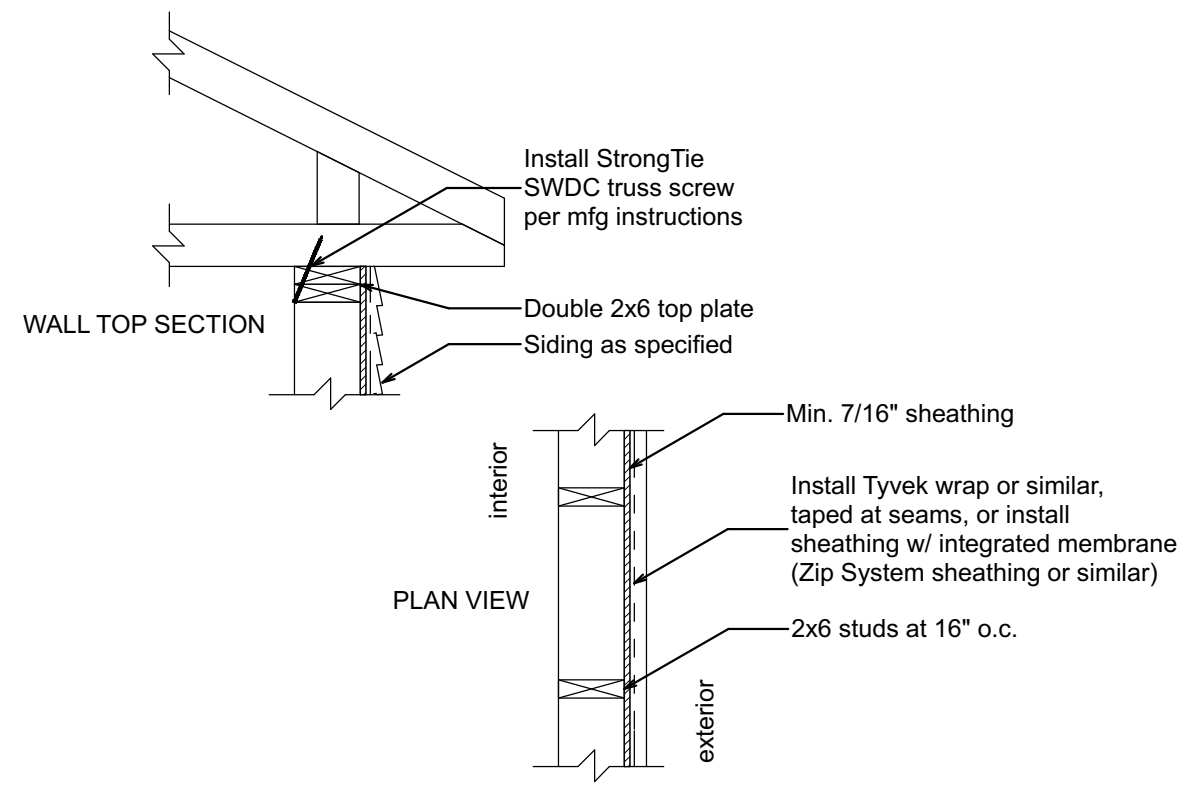




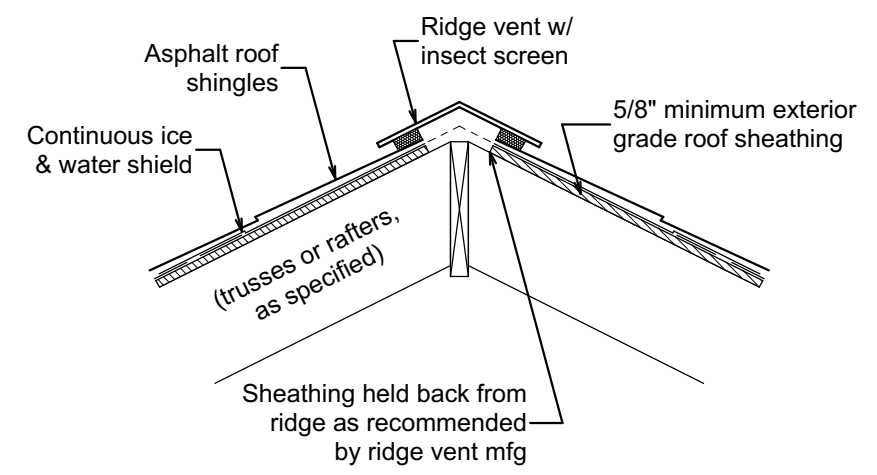
Garage Ceiling Framing Plan
Scale: 1/4" = 1'0"



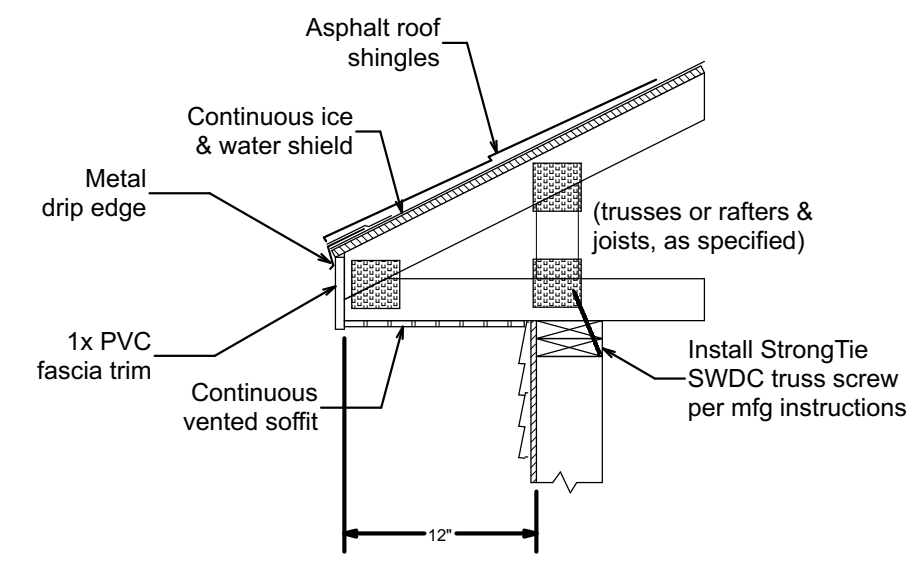
Garage Roof Framing Plan
Scale: 1/4" = 1'0"



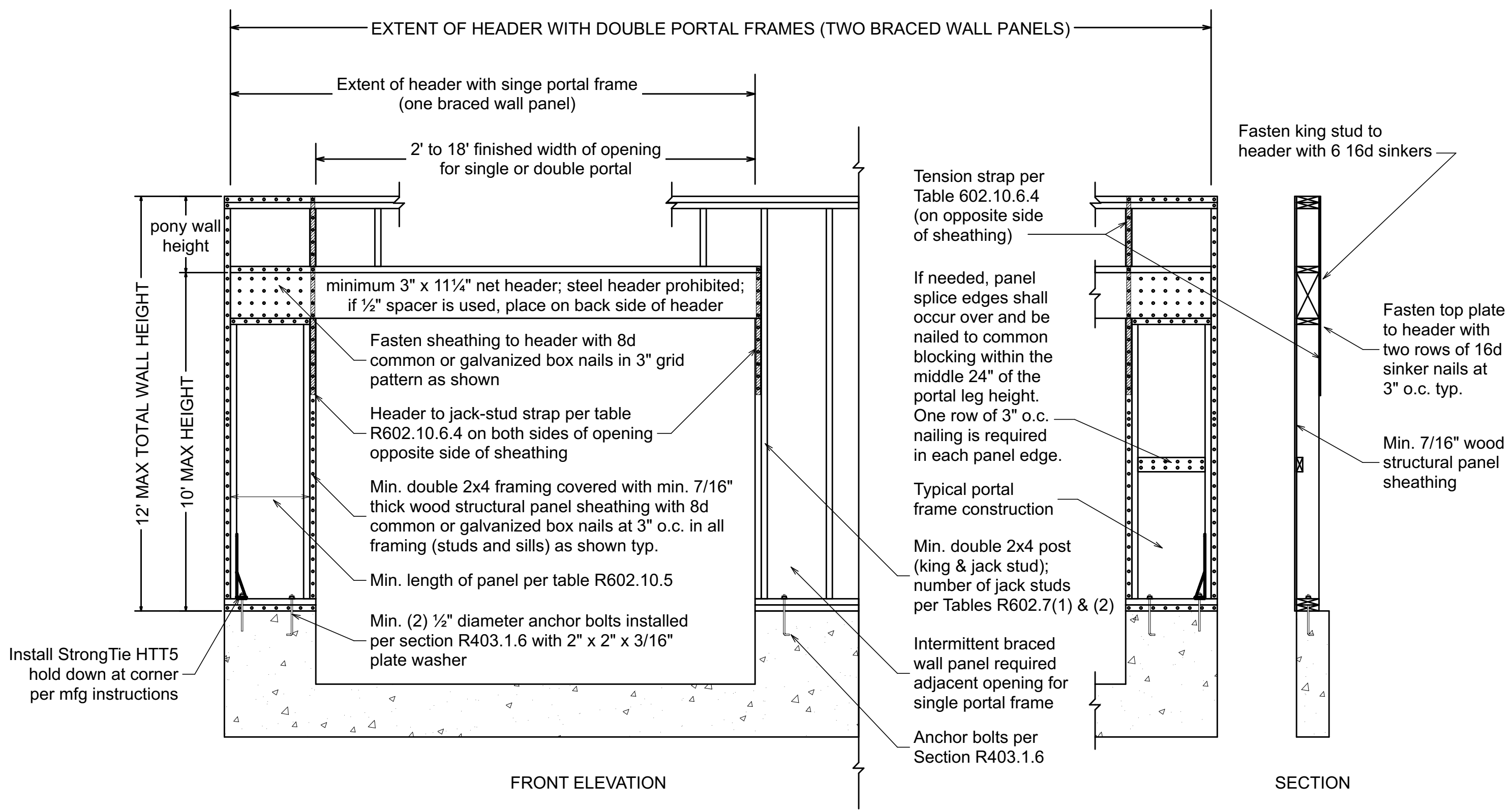
Typical Exterior Wall Details
Do Not Scale



Typical Vented Ridge Detail
Do Not Scale



Typical Vented Soffit Detail
Do Not Scale



Typical Portal Framing Details - PFG Method
Do Not Scale